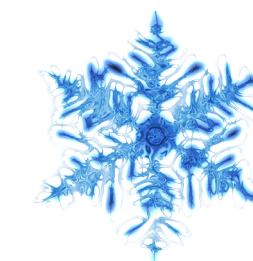




EMORY UNIVERSITY

Environmental Health and Safety Office
Research Administration

Winter Weather **EMERGENCY** Procedures



University Closing:

General Safety:

Don't!

Do!



Wear shoes with Low Tread



Wear shoes with Large Tread



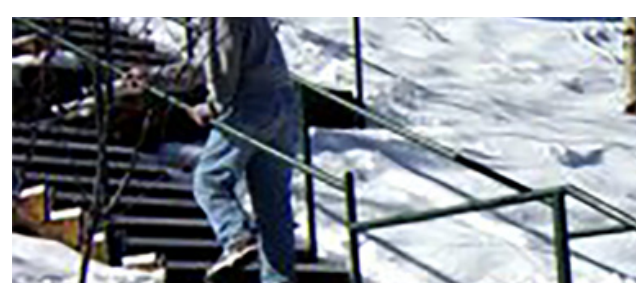
Use walkways with snow or ice



Use walkways that are clear and salted



Rush Up or Down Stairs



Use Hand Rails on Stairs



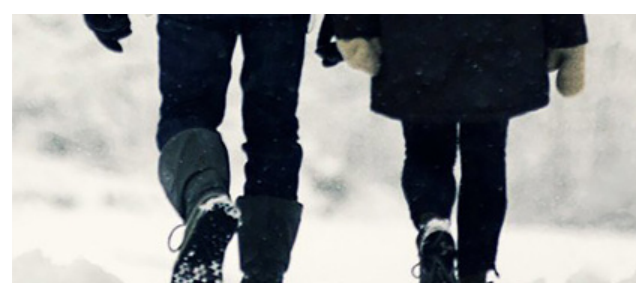
Rush Across Bridges



Use Caution on Bridges



Walk Quickly or Stiff-Legged



Bend Knees Slightly and Walk Slowly



Walk Under Ice Cycles



Stay Clear of Overhead Snow and Ice



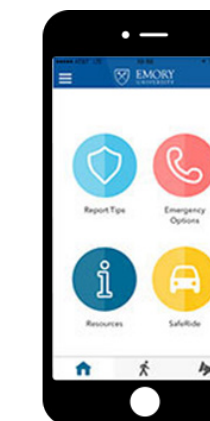
Walk Near Snow Equipment



Yield to and Use Caution Around Snow Equipment



Call Emory's Weather Information Line at 404-727-1234



Download the Emory University LiveSafe app

Campus Entryways:

During a declared **Winter Weather Emergency**, Campus Services teams will clear entrances and sidewalks in the following order:

1



Student Residences

5



North Decatur Building

2



Libraries

6



Entrances and docks to research facilities

3



WPEC

7



All other facilities

4



SAAC